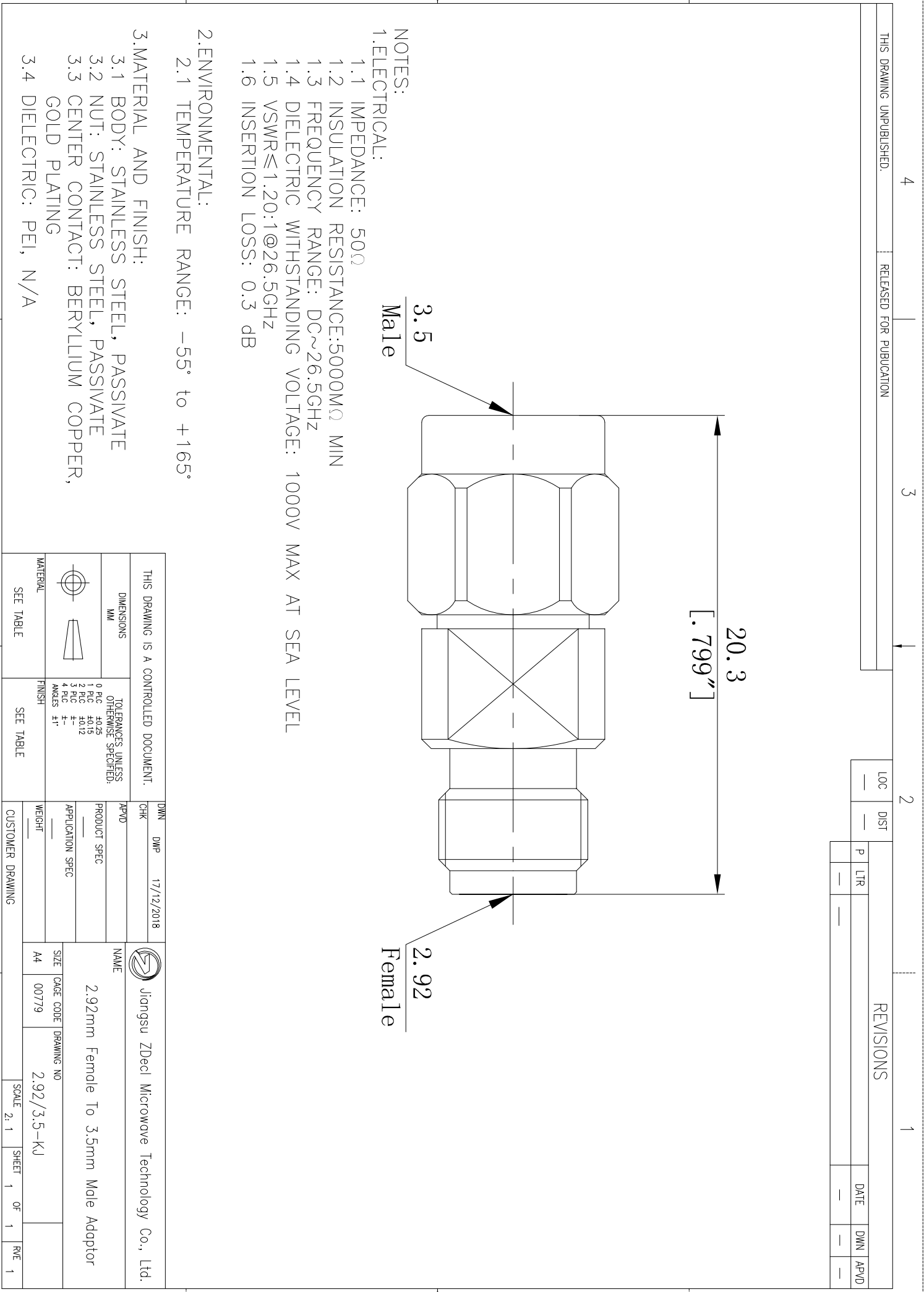


REVISIONS

| LOC | DIST | P | LTR | DATE | DMN | APVD |
|-----|------|---|-----|------|-----|------|
| --- | --- | P | --- | --- | --- | --- |



NOTES:

1. ELECTRICAL:
 - 1.1 IMPEDANCE: 50Ω
 - 1.2 INSULATION RESISTANCE: 5000MΩ MIN
 - 1.3 FREQUENCY RANGE: DC~26.5GHZ
 - 1.4 DIELECTRIC WITHSTANDING VOLTAGE: 1000V MAX AT SEA LEVEL
 - 1.5 VSWR ≤ 1.20:1 @ 26.5GHZ
 - 1.6 INSERTION LOSS: 0.3 dB

2. ENVIRONMENTAL:

- 2.1 TEMPERATURE RANGE: -55° to +165°

3. MATERIAL AND FINISH:

- 3.1 BODY: STAINLESS STEEL, PASSIVATE
- 3.2 NUT: STAINLESS STEEL, PASSIVATE
- 3.3 CENTER CONTACT: BERYLLIUM COPPER, GOLD PLATING
- 3.4 DIELECTRIC: PEI, N/A

THIS DRAWING IS A CONTROLLED DOCUMENT.

| | | | | | | | | |
|------------------|--|---|--|------------------|-----|------------|--|--|
| DIMENSIONS MM | | TOLERANCES UNLESS OTHERWISE SPECIFIED: | | DMN | DWP | 17/12/2018 | NAME | |
| 0 P/C ±0.25 | | 1 P/C ±0.15 | | CHK | | | Jiangsu Zdecl Microwave Technology Co., Ltd. | |
| 2 P/C ±0.12 | | 3 P/C ± | | APVD | | | 2.92mm Female To 3.5mm Male Adaptor | |
| ANGLES ±1° | | FINISH | | PRODUCT SPEC | | | SIZE TAGE CODE DRAWING NO | |
| SEE TABLE | | SEE TABLE | | APPLICATION SPEC | | | A4 00779 2.92/3.5-KJ | |
| MATERIAL | | WEIGHT | | CUSTOMER DRAWING | | | SCALE 2: 1 SHEET 1 OF 1 R/E 1 | |
| SEE TABLE | | | | | | | | |