

4

3

2

1

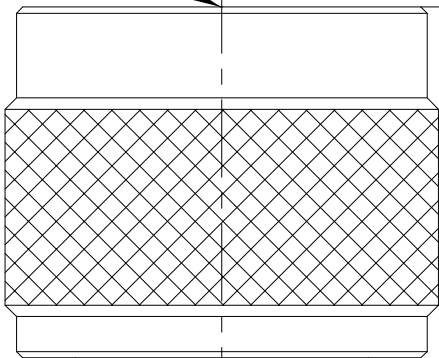
D

D

30.7
[1.209"]

∅14.2
[.559"]

N
Male



NOTES:

1.ELECTRICAL:

- 1.1 IMPEDANCE: 50Ω
- 1.2 INSULATION RESISTANCE:50000MΩ MIN
- 1.3 FREQUENCY RANGE: DC~3GHz
- 1.4 DIELECTRIC WITHSTANDING VOLTAGE: 1000V MAX AT SEA LEVEL
- 1.5 VSWR≤1.10:1@3GHz
- 1.6 POWER:3W

2.ENVIRONMENTAL:

- 2.1 TEMPERATURE RANGE: -55° to +165°

3.MATERIAL AND FINISH:

- 3.1 BODY: STAINLESS STEEL, PASSIVATE
- 3.2 NUT: STAINLESS STEEL, PASSIVATE
- 3.3 CENTER CONTACT: BERYLLIUM COPPER, GOLD PLATING
- 3.4 DIELECTRIC: PTFE, N/A

THIS DRAWING IS A CONTROLLED DOCUMENT.

DIMENSIONS
MM

TOLERANCES UNLESS
OTHERWISE SPECIFIED:

- 0 P/C ±0.25
- 1 P/C ±0.15
- 2 P/C ±0.12
- 3 P/C ±
- 4 P/C ±
- ANGLES ±1°



MATERIAL

SPE TABLE

FINISH

SPE TABLE

DMN DCJ 25/07/2017

CHK

APPD

PRODUCT SPEC

NAME

Jiangsu ZDecl Microwave Technology Co., Ltd.

N Male Load

APPLICATION SPEC

WEIGHT

SIZE

A4

CAGE CODE

00779

DRAWING NO

NJL-03-03W

CUSTOMER DRAWING

SCALE

2: 1

SHEET

1

OF

1

R/E

1

4

3

2

1

A

A

C

C

B

B